

GRAPHIC MAP
OF VOLUMES

CORRECTION RECORD

REV. NO.	DATE OF CORRECTION	ATTACHED BY	DATE ATTACHED
40	9-6-51	ja	7-13

All information contained in this map, covering properties that might be related to National Defense activities, is to be treated as a security confidential by our subscribers and not divulged to any outside interests. The U. S. Espionage Act makes it incumbent upon possessors of information relating to National Defense to take all possible precautions to prevent it from falling into the hands of persons inimical to the United States. Transfers or other reproductions of Sanborn Maps in full or in part are prohibited.

CODES OF STRUCTURAL UNITS FOR FIRE-RESISTANT AND NON-FIRE-RESISTANT BUILDINGS

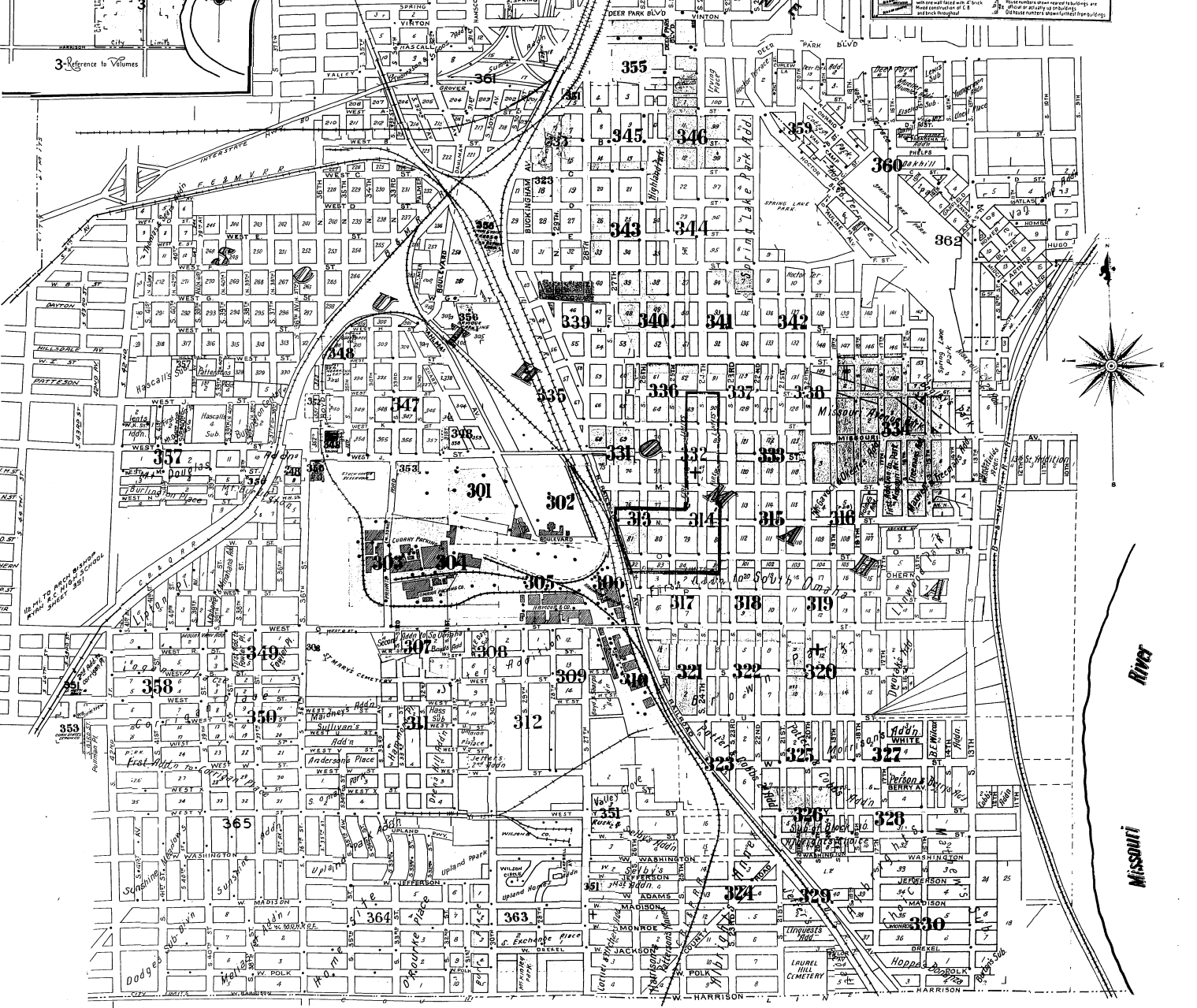
GROUP	STRUCTURAL UNIT	GROUP	STRUCTURAL UNIT
A. FIRE-RESISTANT	1. Reinforced Concrete	B. NON-FIRE-RESISTANT	1. Reinforced Concrete
	2. Masonry		2. Masonry
	3. Steel		3. Steel
	4. Wood		4. Wood
	5. Other		5. Other

KEY

Fire proof construction
 Block building
 Stone building
 Concrete
 Brick
 Wood
 Metal
 Glass
 Iron
 Steel
 Aluminum
 Copper
 Lead
 Zinc
 Tin
 Nickel
 Silver
 Gold
 Platinum
 Palladium
 Rhodium
 Iridium
 Osmium
 Rhenium
 Ruthenium
 Cobalt
 Nickel
 Iron
 Manganese
 Chromium
 Vanadium
 Titanium
 Zirconium
 Niobium
 Molybdenum
 Technetium
 Rhenium
 Osmium
 Iridium
 Platinum
 Gold
 Silver
 Copper
 Zinc
 Aluminum
 Magnesium
 Sodium
 Potassium
 Calcium
 Barium
 Strontium
 Bismuth
 Antimony
 Arsenic
 Selenium
 Tellurium
 Polonium
 Astatine
 Francium
 Radium
 Actinium
 Thorium
 Protactinium
 Uranium
 Neptunium
 Plutonium
 Americium
 Curium
 Berkelium
 Californium
 Einsteinium
 Fermium
 Mendelevium
 Nobelium
 Lawrencium



SEE VOL. FOUR SECT. VOLUME



SARBY COUNTY