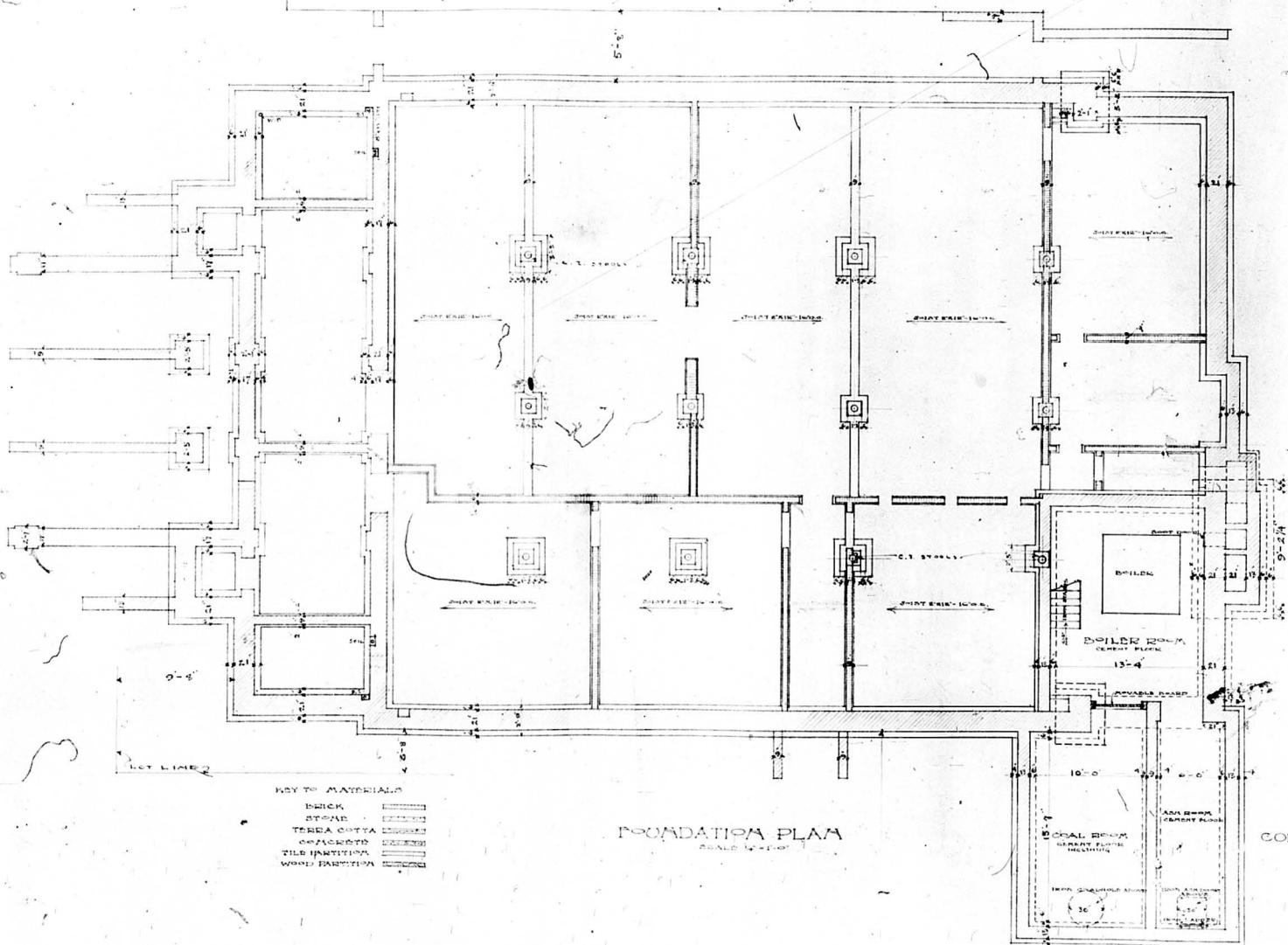


#133

PLANS APPROVED
In accordance with
Sections 1 and 3
Ordinance 11,416
Redman M. Brown
CITY ENGINEER
BUILDING DEPARTMENT
DATE *4/30/1910* Sheet 548

*Synagogue
181 Chicago*

*1719 Chicago St.
1714 Belmont
1710 Ontario*

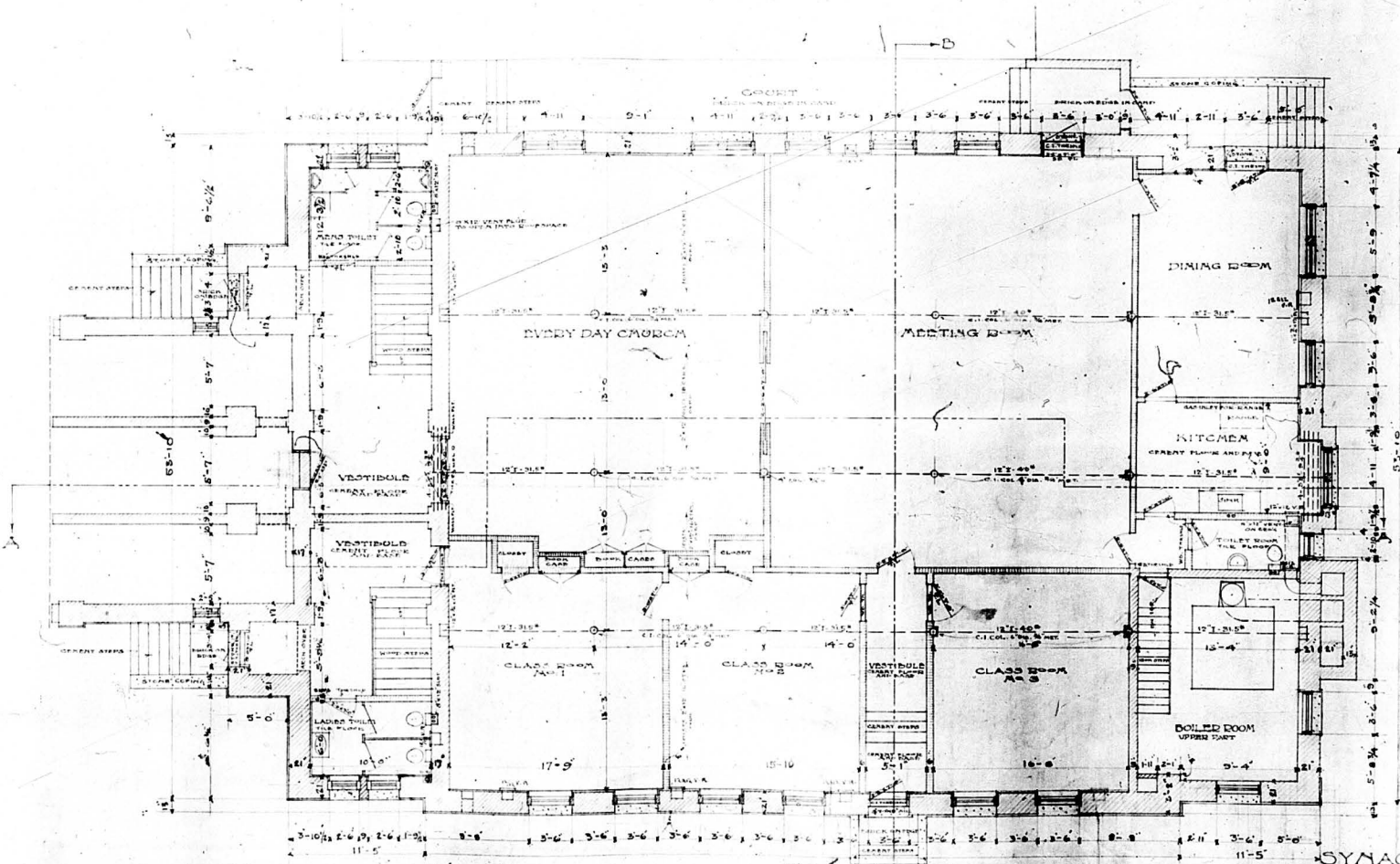


- KEY TO MATERIALS
- BRICK
 - STEEL
 - TERRA COTTA
 - CONCRETE
 - TILE PARTITION
 - WOOD PARTITION

FOUNDATION PLAN

SYNAGOGUE
 CORNER 15th & CHICAGO ST.
 OMAHA - IOWA

JOHN H. HARRIS ARCHT.
 215 PINE ST. OMAHA, IOWA



KEY TO MATERIALS

BRICK	[Symbol]
CONCRETE	[Symbol]
FORMA CONCRETE	[Symbol]
CONCRETE	[Symbol]
TILE PARTITION	[Symbol]
WOOD PARTITION	[Symbol]

BASEMENT PLAN
SCALE 1/4" = 1'-0"

SYNAGOGUE
CORNER 187 & CHICAGO STS.
OMAHA-NEBR.

FORM LATERALS ABOUT
FOR BLUE OMAHA ARCHT.

2