

1928 Corby et.
W. 47 1/2 of 2139
W.

~~Phillips & Caldwell~~
Mills & Caldwell

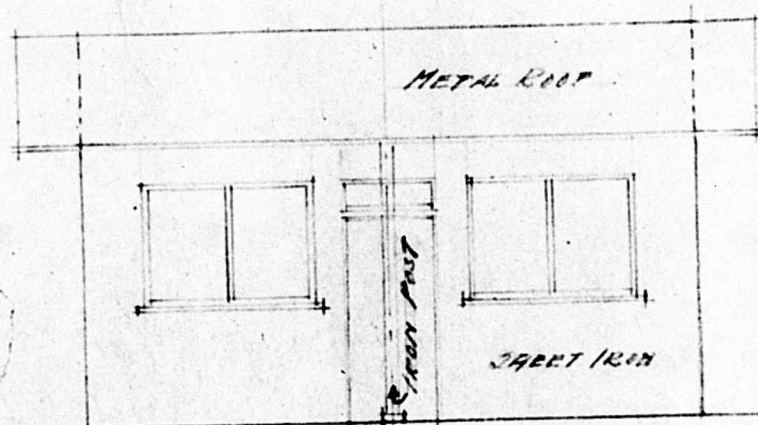
#252

PLANT APPROVED
 In accordance with
 the provisions of
 Code No. 11, 8.1.

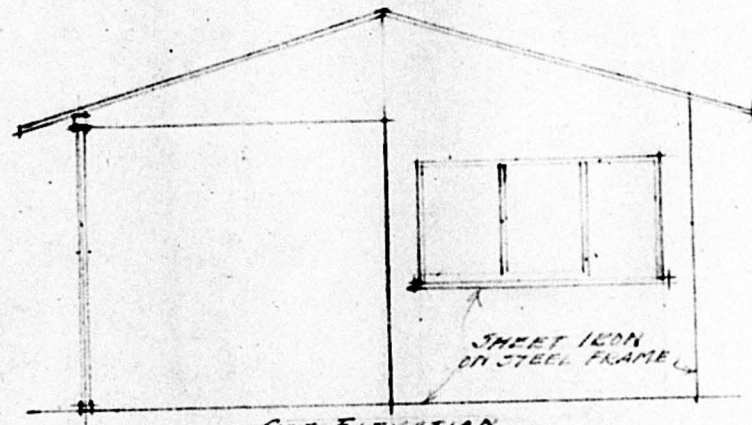
Robert M. Brown
CHIEF ENGINEER

DATE 4-5-1915 Per # 194

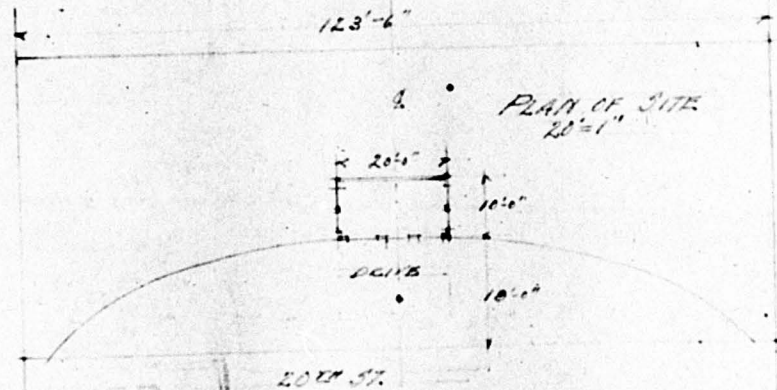
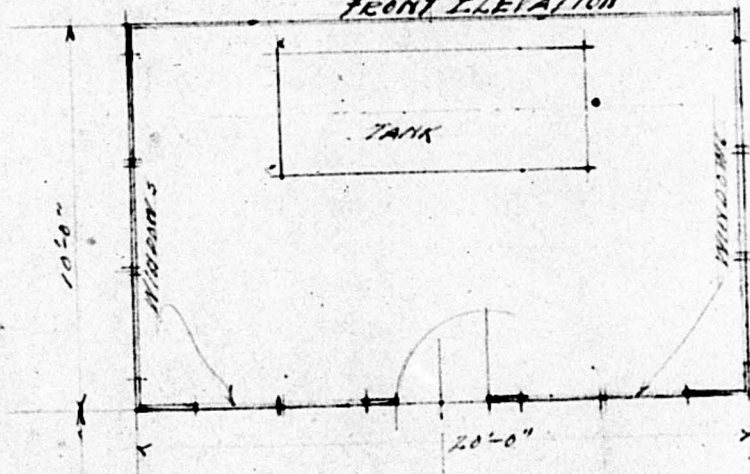
National Refining
 Station
 Corby



FRONT ELEVATION



SIDE ELEVATION



DRIVE PLAN APPROVED
 In accordance with
 Sections 15 and 19
 PLAN distance 8488
 IRON COLUMN A

SKETCH OF FILLING STATION
 FOR
 NATIONAL REFINING CO
 OMAHA,
 SCALE 1/2" = 1'-0"