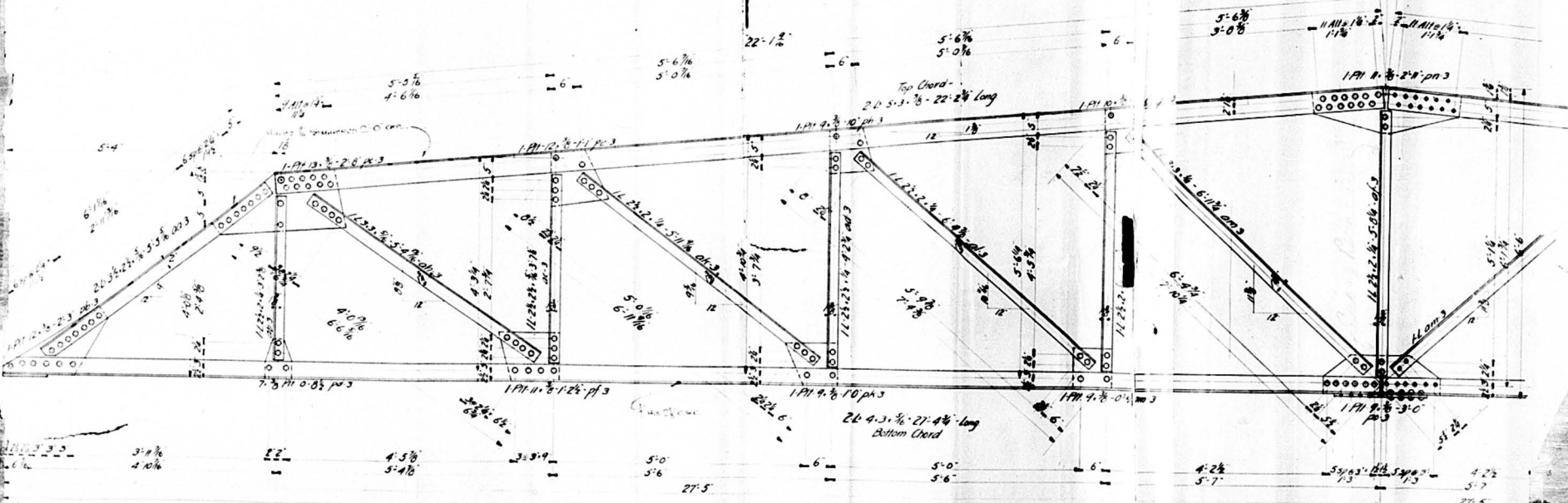


4918
8/16
Dred
Sec 19
Bl. 17
176

#297

PLANS APPROVED
In accordance with
Sections 1 and 3
Ordinance 11,416
Edman Nelson
CHIEF ENGINEER
BUILDING DEPARTMENT
DATE 7-17-16 Per # 791

Linas
Lundgren Bros
Garage



Symmetrical abt
& except as shown of
splice

Required Trusses as shown - Mark "T1"
Reqd. 1 Truss MK "T2"

Bolt List
50-3/4" 0-1 3/4" Lg
75-3/4" 0-2 1/2" Lg



General Note -
Holes 3/4"
0 Nis - 1/4"
Paint - 1 Coat Black

OMAHA STRUCTURAL STEEL WORKS
OMAHA, NEB
ORDER NO. 6942
DATE 4/10/35
DRAWN BY [Signature]
CHECKED BY [Signature]