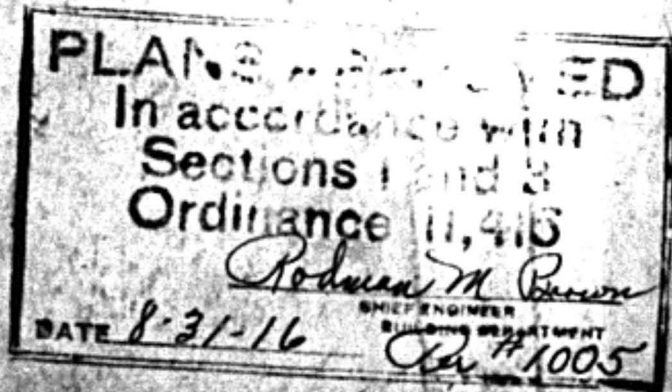
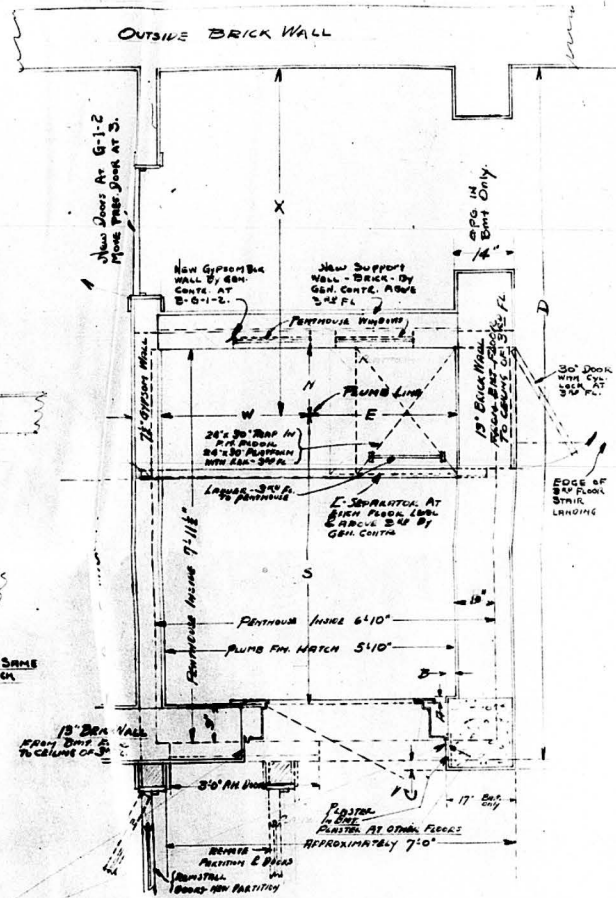
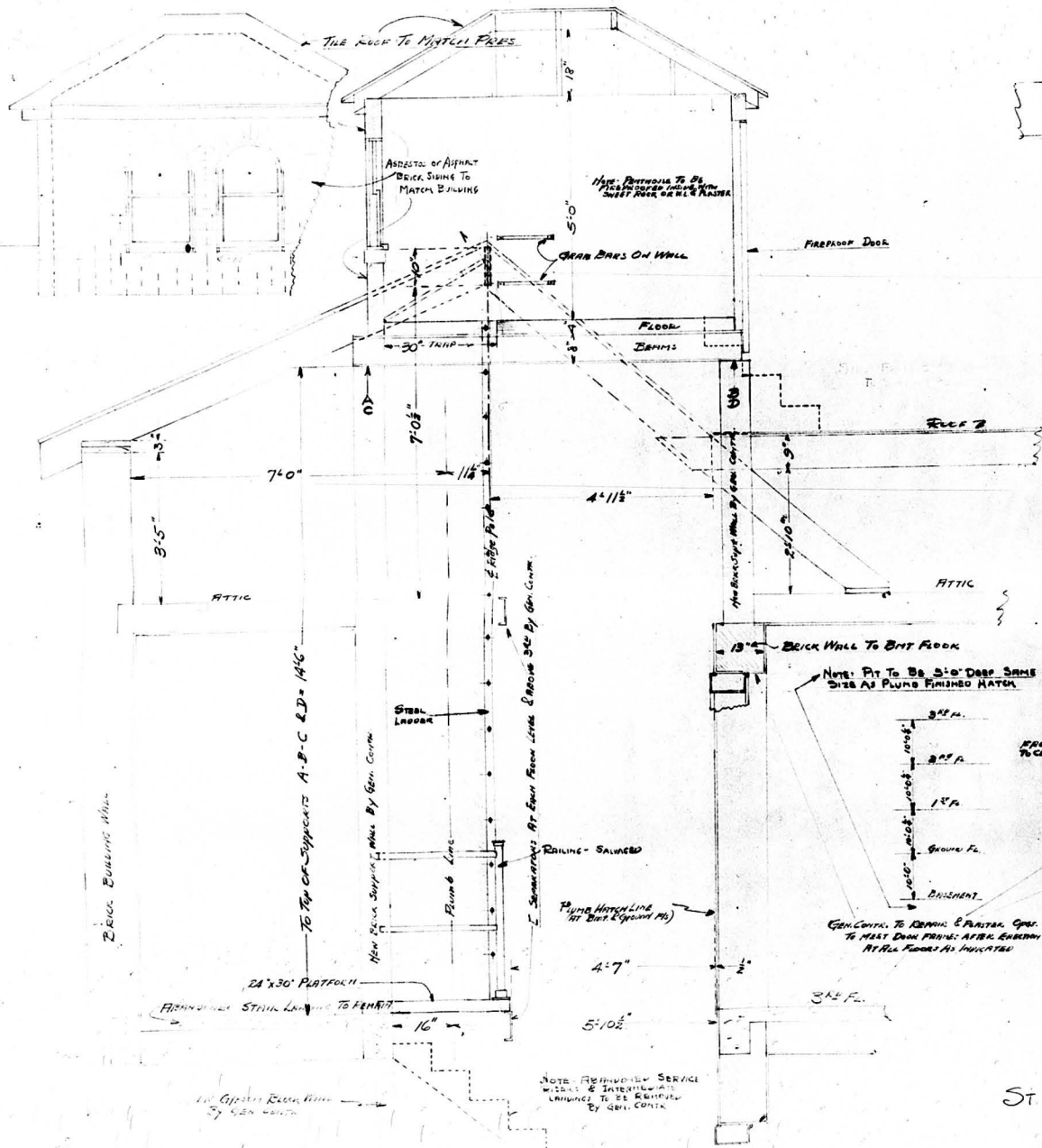


#301



*Brooks Realty Co.  
St Regis apt  
619 So 37th  
L. 3 Bl. 10  
W. Omaha*



FLOOR	X	N	S	E	W	A	B	C	D
3	10 1/2"	16"	5'-0 1/2"	2'-11 1/2"	2'-11 1/2"	0	0	0	13'-4 1/2"
2	10"	15 1/2"	5'-10 1/2"	2'-11 1/2"	2'-11 1/2"	0	0	0	
1	6 1/2"	16 1/2"	5'-10 1/2"	2'-11 1/2"	2'-11 1/2"	0	0	0	
G	6 1/2"	15 1/2"	5'-10"	2'-11"	2'-11 1/2"	0	0	0	13'-0"
B	6 1/2"	17'-0"	5'-10"	2'-11"	2'-11 1/2"	1"	2 1/2"	2 1/2"	13'-4 1/2"

Dimensions "N" To Concrete Beams "A" & "D" To Finished Floor Slabs  
Dimensions "S" To Concrete Beams "B" & "C" To Finished Floor Slabs

ST. REGIS APARTMENTS - SOUTH BUILDING  
618 SOUTH 37th ST.  
OMAHA - NEBRASKA