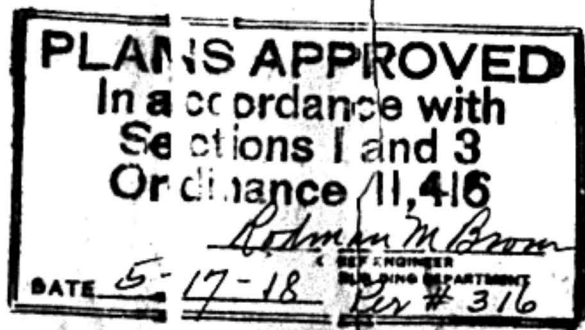


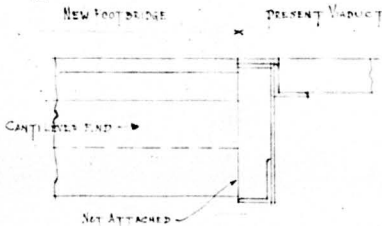
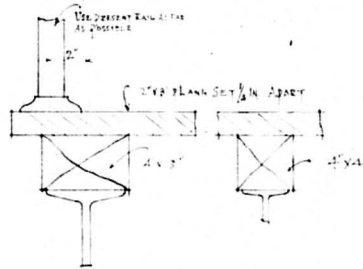
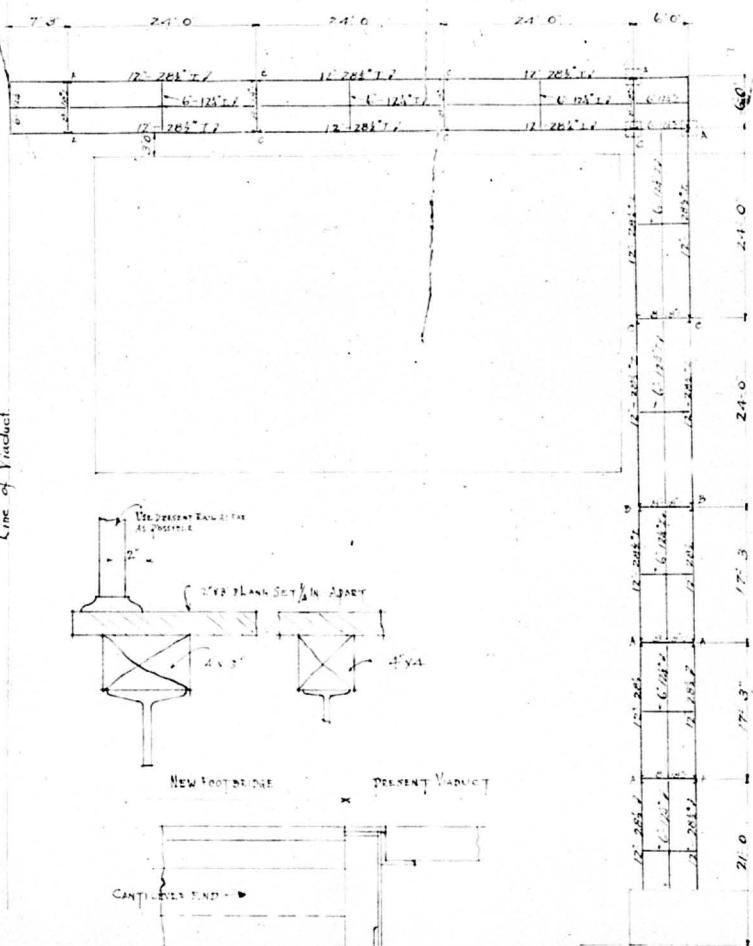
# 363



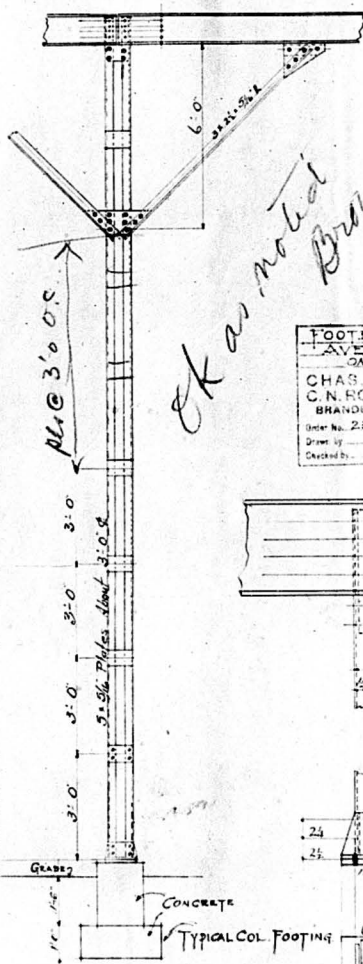
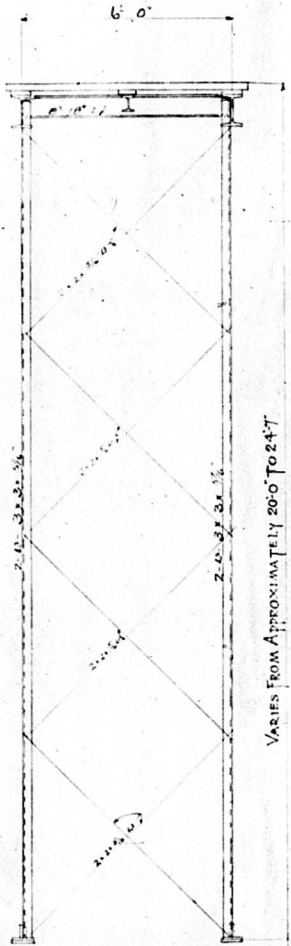
Foot Bridge  
Avery Is.

814-20 S 10th Ave  
L-748 B-203  
Orwig Town

Line of Viaduct



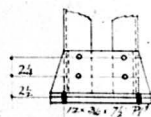
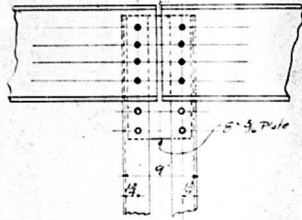
Use 5/8" rivets.



SIZE OF FOOTINGS  
 A = 2' x 2'  
 B = 2'2" x 2'  
 C = 2'2" x 2'

*OK as noted  
 Brown  
 May 21 1918*

FOOTBRIDGE FOR  
 AVERY CO.  
 OMAHA, NEBR.  
 CHAS. M. NYE ARCHITECTS  
 C. N. ROBINSON  
 BRANDIS BUILDING OMAHA  
 Order No. 281  
 Drawn by  
 Checked by  
 Approved by *L. A. 2/12*



Proposed Design of Foot Bridge for Avery Musq Co.  
 Total load 110' W. Sp. Ft.  
 Contract - 7508