

#474

**PLANS APPROVED**  
 In accordance with  
 Sections 1 and 3  
 Ordinance 11,416

*R. E. Edgcomb*  
CHIEF ENGINEER  
BUILDING DEPARTMENT

DATE 7-23-20 *Per # 957*

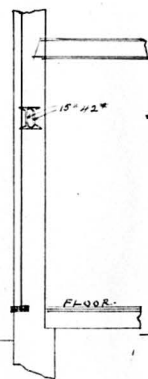
*Alterations*  
*Oakland Motor Co.*

*1917 Harv. 4*  
*1-18-1942 67512*  
*Orig City*

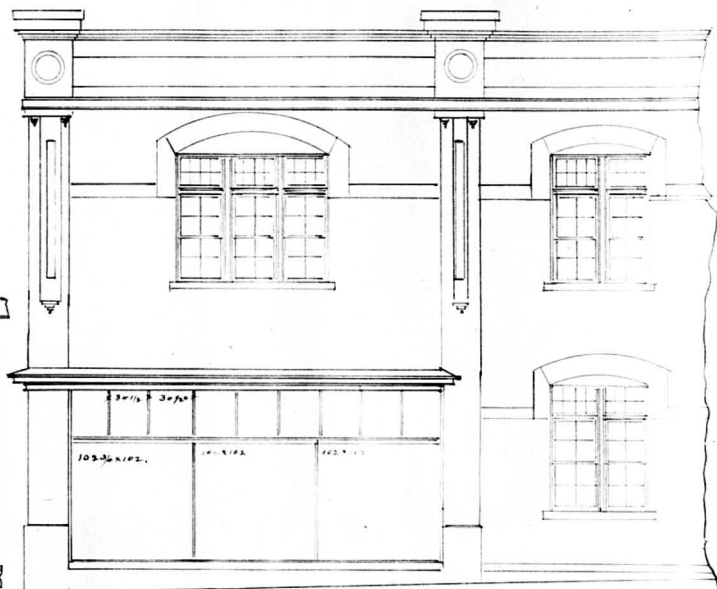
*1000 N. Co.*  
*1st Building*  
*Portland*



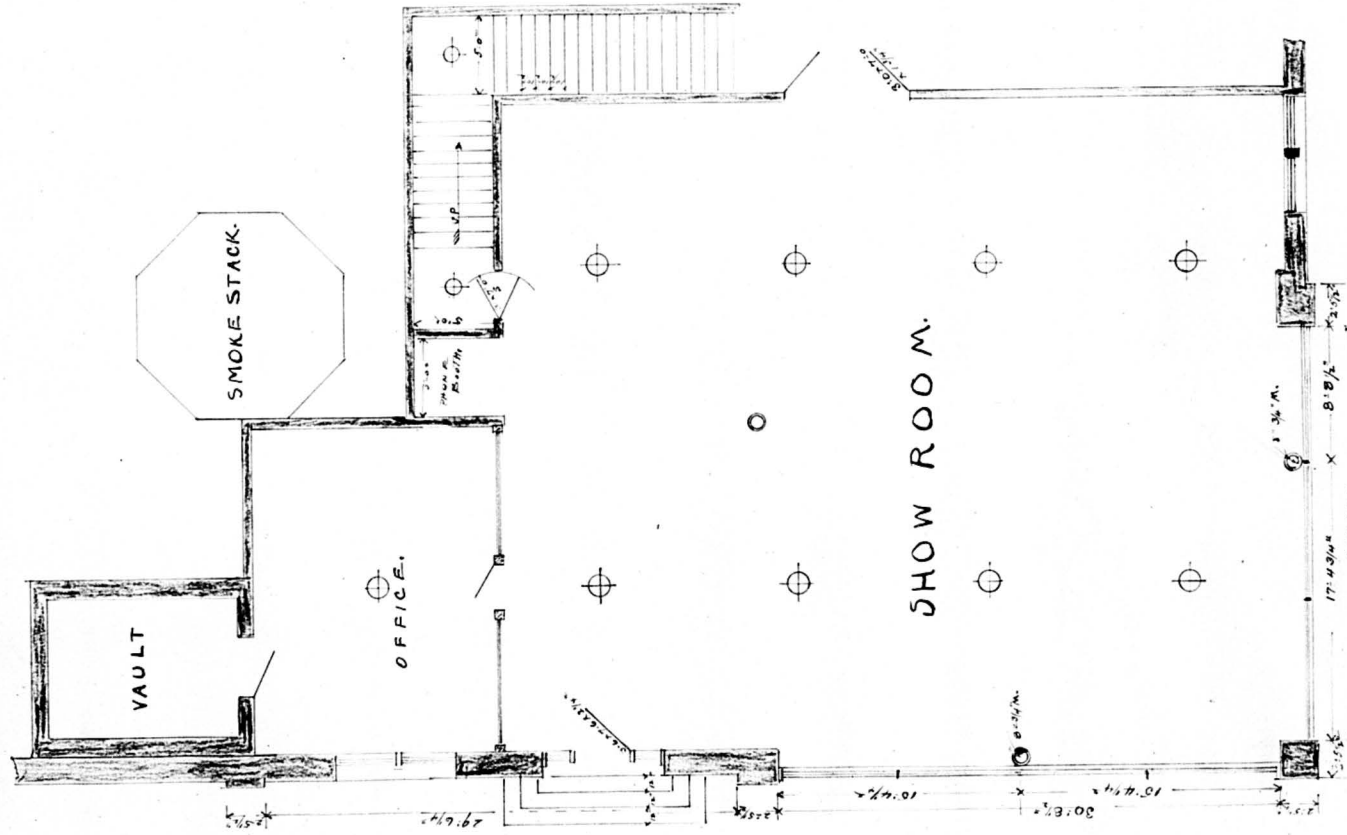
NORTH ELEVATION.  
NEW STORE FRONT.



SCALE 1/4\"/>



WEST ELEVATION  
OAKLAND MOTOR CAR CO.  
TWENTYETH AND HARNEY STS.  
JOHN H. HARTE, CONTR. OMAHA NEBR.



FIRST FLOOR PLAN. SCALE 1/4" = 1'-0"

ALTERATIONS TO OAKLAND MOTOR CAR & BULDC.  
 S.E. COR. 20" AND HARNEY ST.  
 JOHN H. HARTE GEN. CON.  
 OMAHA N.E.