

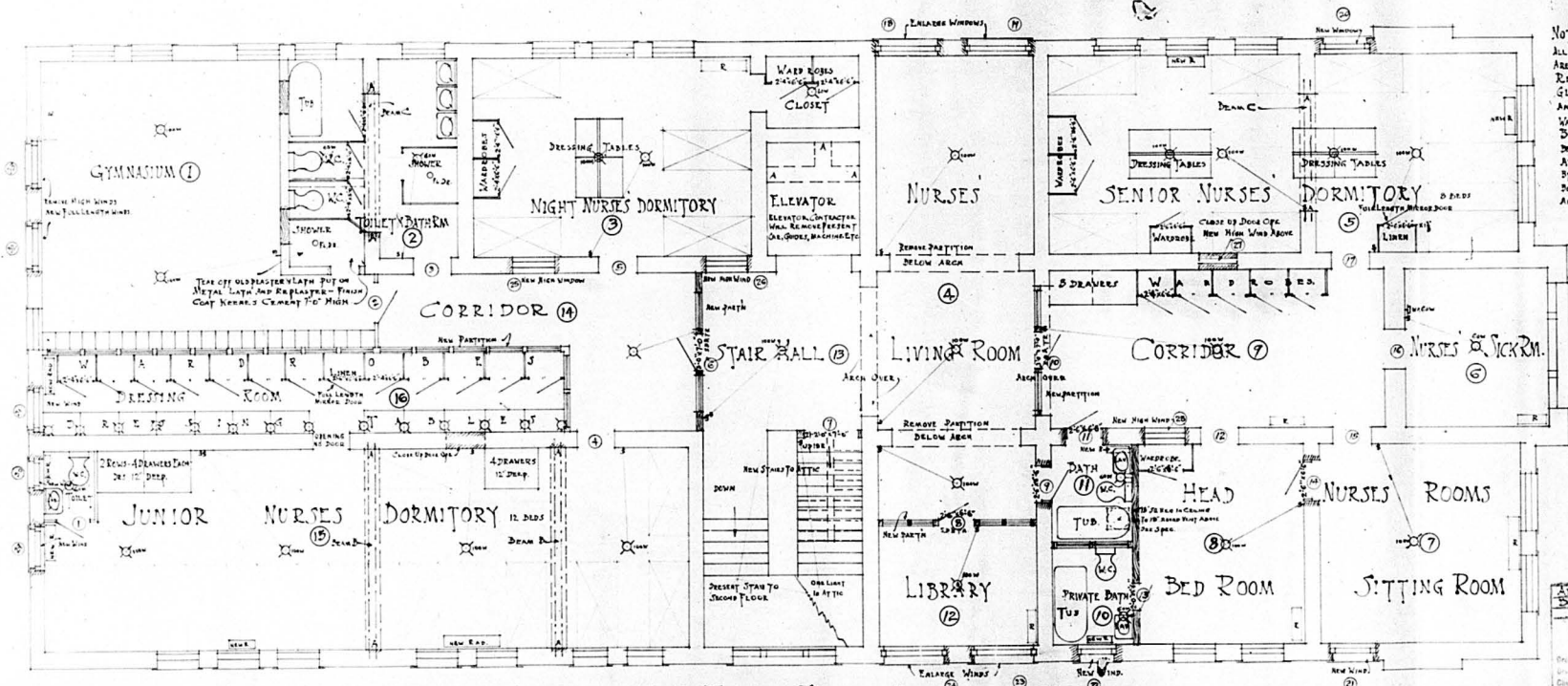
#516

PLANS APPROVED In accordance with Sections 1 and 3 Ordinance 11,416 <i>R. E. Edacomb</i> CHIEF ENGINEER BUILDING DEPARTMENT DATE <i>6-1-21</i> <i>Per # 698</i>

*Alterations
Douglas Co
Hospital
3rd floor.*

*404 Poppleton Mill
Douglas Co Hospital Tract*

spec



NOTES.—
 ALL PRESENT OPENINGS IN INTERIOR WALLS ARE ARCHED.
 REMOVE ALL WALLS MARKED A & GLASS IN ALL INTERIOR WINDOWS, DOORS, AND PARTITIONS MUST BE SPERITE.
 WARDEN DOORS EXCEPT WHERE FALL LENGTH BRIDGE DEAN B—2-T IS 15" WITH BOLTS, JOISTS & DOORING PLATES—ANCHOR THEM TO WALLS AT ENDS. DETAIL MUST BE APPROVED BY ARCHITECT—DEAN C—2-4-15-15" W/ BOLTS & DOORING PLATES—SECURELY ANCHORED AT ENDS.

APPROVED—

 CHIEF OF STAFF.

 Secy.

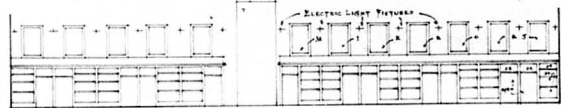
ALTERATIONS AT
 DOUGLAS COUNTY HOSPITAL
 OMAHA - NEBR.
 OHAS M. NYE ARCHITECT
 DRAWING NO. 217
 SCALE 1/4" = 1'-0"

THIRD FLOOR PLAN
 SCALE 1/4" = 1'-0"



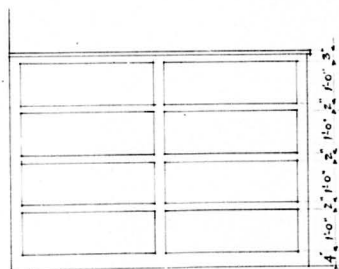
DRESSING ROOM - NORTH SIDE - WARDROBES

1/2" LOCK PANEL DOORS EXCEPT
WHEAT DOOR 1/2" - ALL WHEELS
BEST AM. PLATE GLASS MIRRORS.

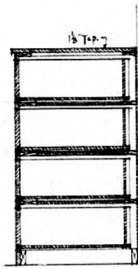


DRESSING ROOM - SOUTH SIDE DRESSING TABLES

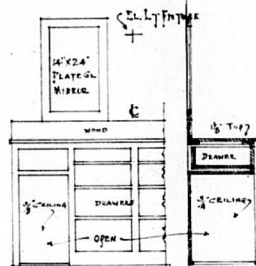
SCALE 1/4" = 1 FT.



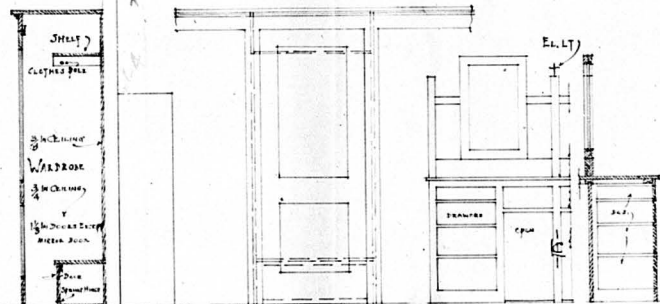
TYPICAL CASE OF DRAWERS
SCALE 3/4" = 1 FT.
FOR LENGTH OF CASES SEE PLAN.



SECTION

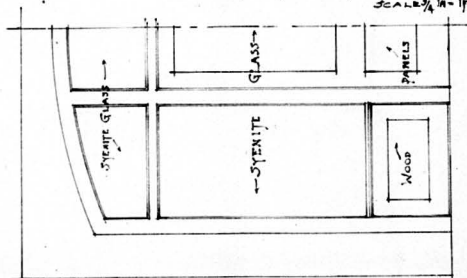


ELEVATION OF DRESSING TABLE AND SECTION THRU TABLE & WARDROBE.
SCALE 3/4" = 1 FT.

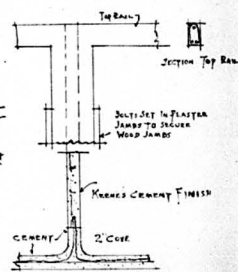


PARTIAL ELEVATION OF WARDROBE -

ELEVATION SECTION
FREE STANDING DRESSERS - BACK TO BACK -
SEE PLAN
SCALE 3/4" = 1 FT.



1/2 PARTN IN CORRIDOR AT ARCH
OTHER PARTS SIMILAR BUT
SQUARE HEAD - SEE
PLAN FOR LIBRARY PARTN
SCALE 1/2" = 1 FT.



TOILET & SHOWER PARTNS & FLOORS
SCALE 1/2" = 1 FT.

ALTERATIONS AT
DODD COUNTY HOSPITAL
- OMAHA - NEBR.
O. H. M. NYE, ARCHITECT
CIVIL ENGR.
Enter No. 292 Filed in 2
City of J. Date of
Created by Approved by J. DATE 1914