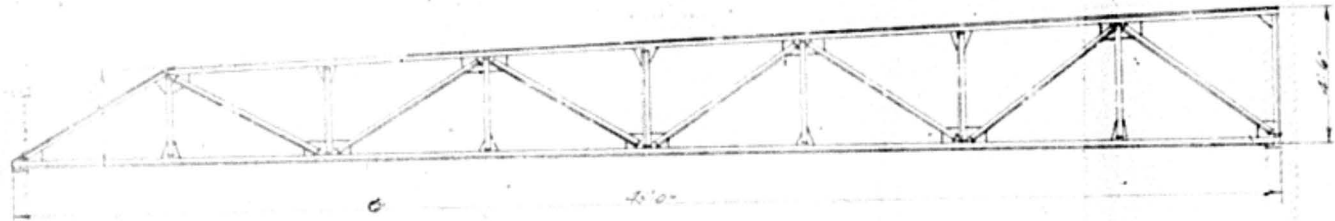


#545

PLANS APPROVED
In accordance with
Sections 1 and 3
Ordinance 11,416
R. E. Edgcomb
CHIEF ENGINEER
BUILDING DEPARTMENT
DATE 11-2-21 *Per # 1768*

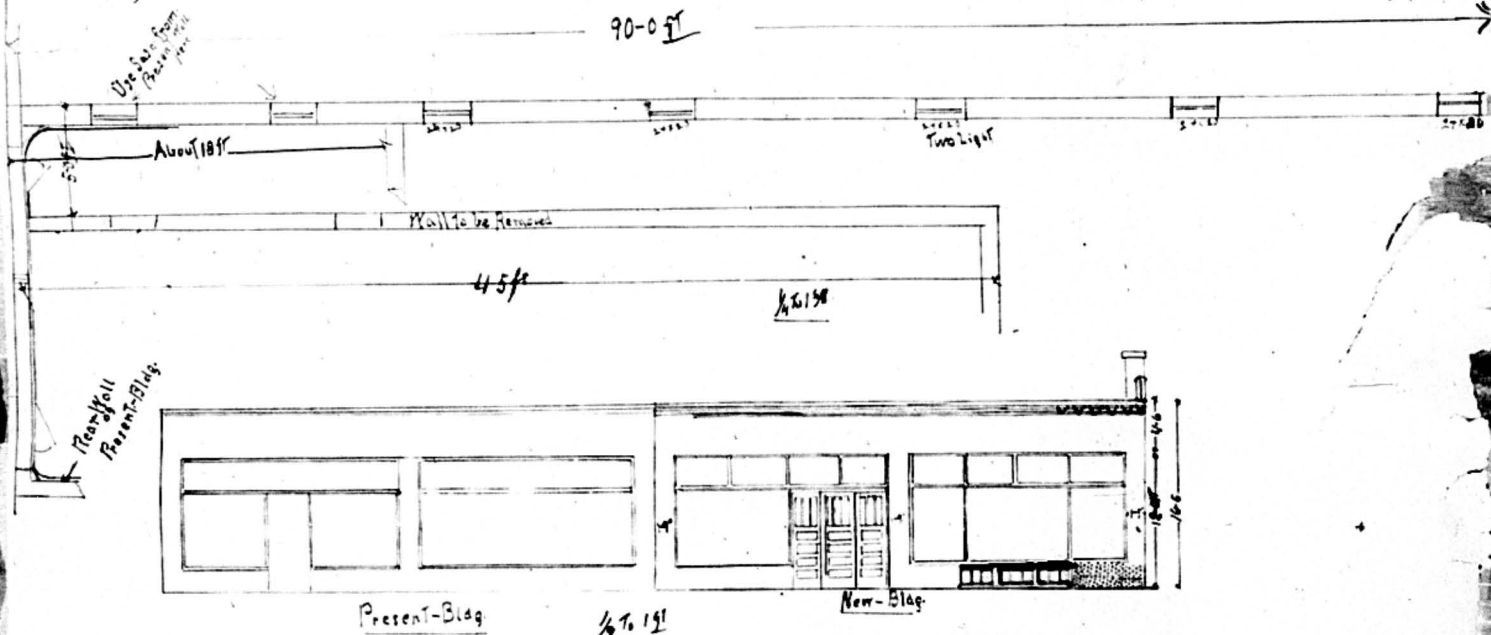
Bully Garage
60th Military
6005 military ave
L-2 B-1
Kaley on flight add



Floor -
 Building -
 Made by - C. L. S.
 Drawn by -

Job No -
 Street No -
 Date - Sept - 27, 1921

Inspection by -
 Paint -
 Green White -
 P. 1100



Front Elev.
of
Garage for Albert Budde
606 and Military Ave. E. Minn.

Healy & Russell
General-Contractors
Tel. No. 567-0441, 4882

1-12" 7# Channel
Two Sides
20-72 Long
One Sides 19-6" Long
1-1/2" x 4" Plate
Rivet to Channel

1-2-9" 21# Beams 14-6" Long
with bolt and spreader

