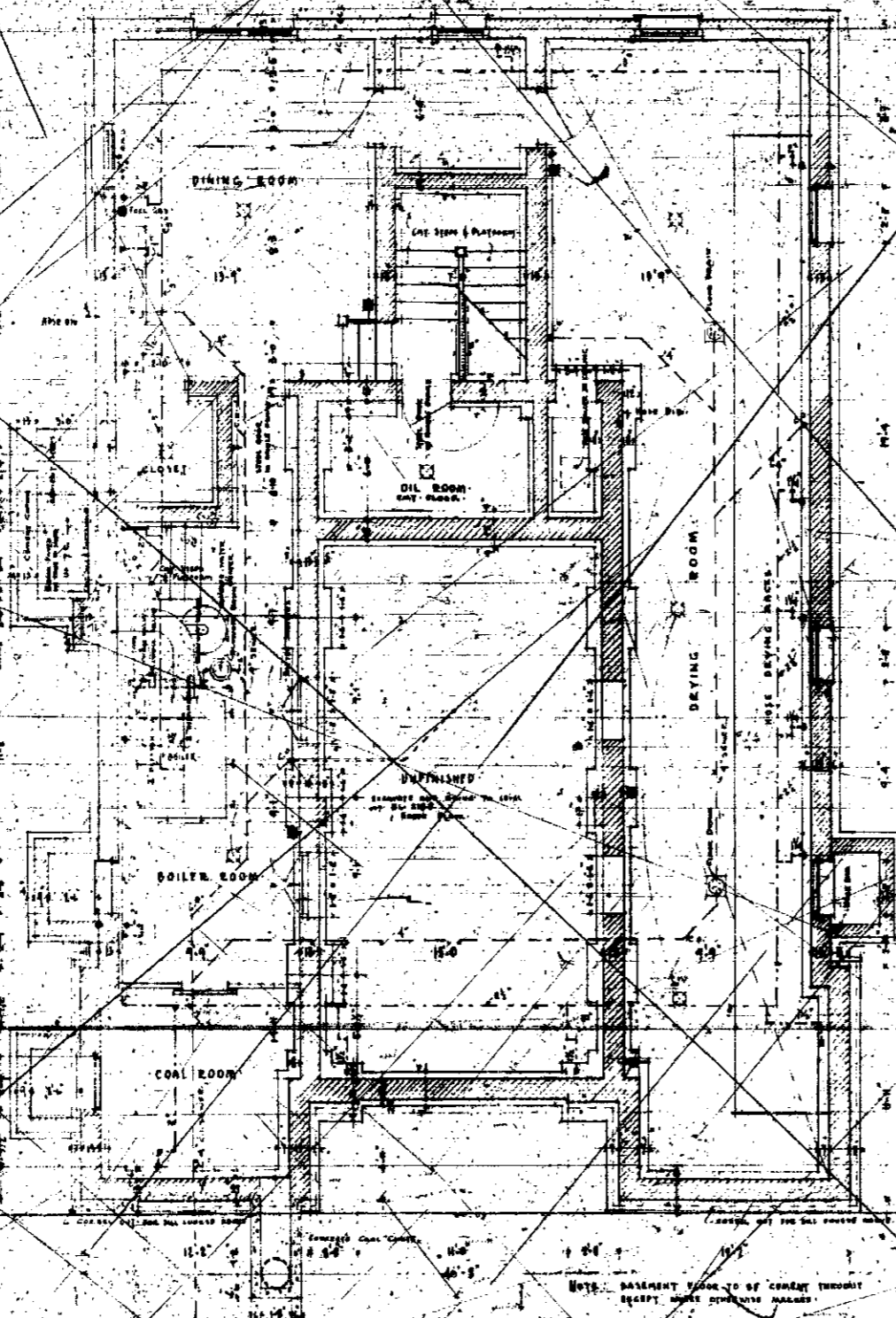


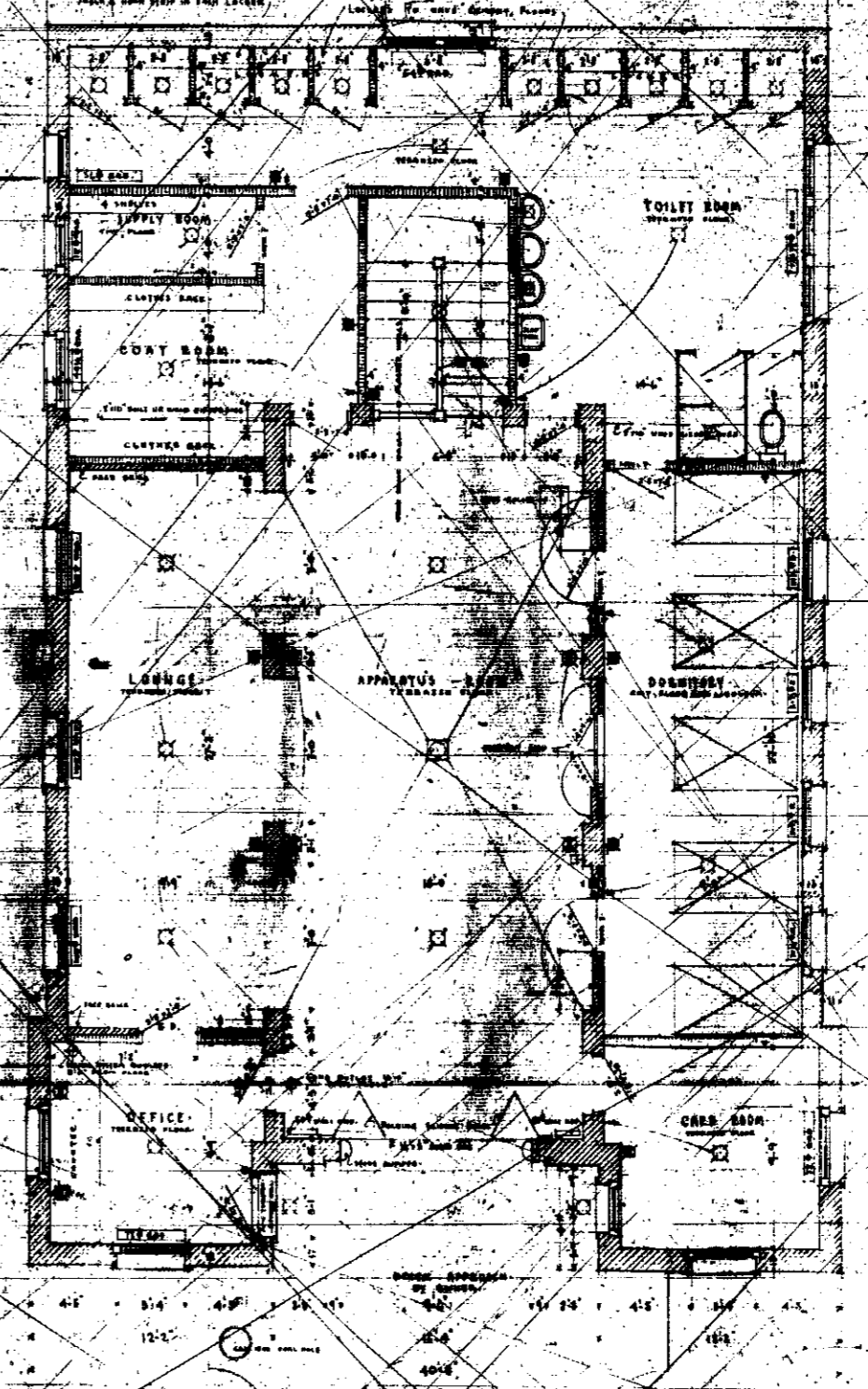
*579

PLANS APPROVED
In accordance with
Sections 1 and 3
Ordinance 11,416
R.L. Edwards
CHIEF ENGINEER
BULLETS DEPARTMENT
DATE 10-10-72
Plan # 2229

*Fire Sta
10th St
between Q & R
1920
5227 & 20 St
L-18-19-B-12
Brown Park add*



BASEMENT PLAN



FIRST FLOOR PLAN

NOTE: WALLS TO BE 12" THICK
 TOP OF FINISHED FLOOR FINISHED PLUMB LINE.

NOTE: ALL DIMENSIONS NOT
 SHOWN TO CENTER UNLESS
 OTHERWISE NOTED.

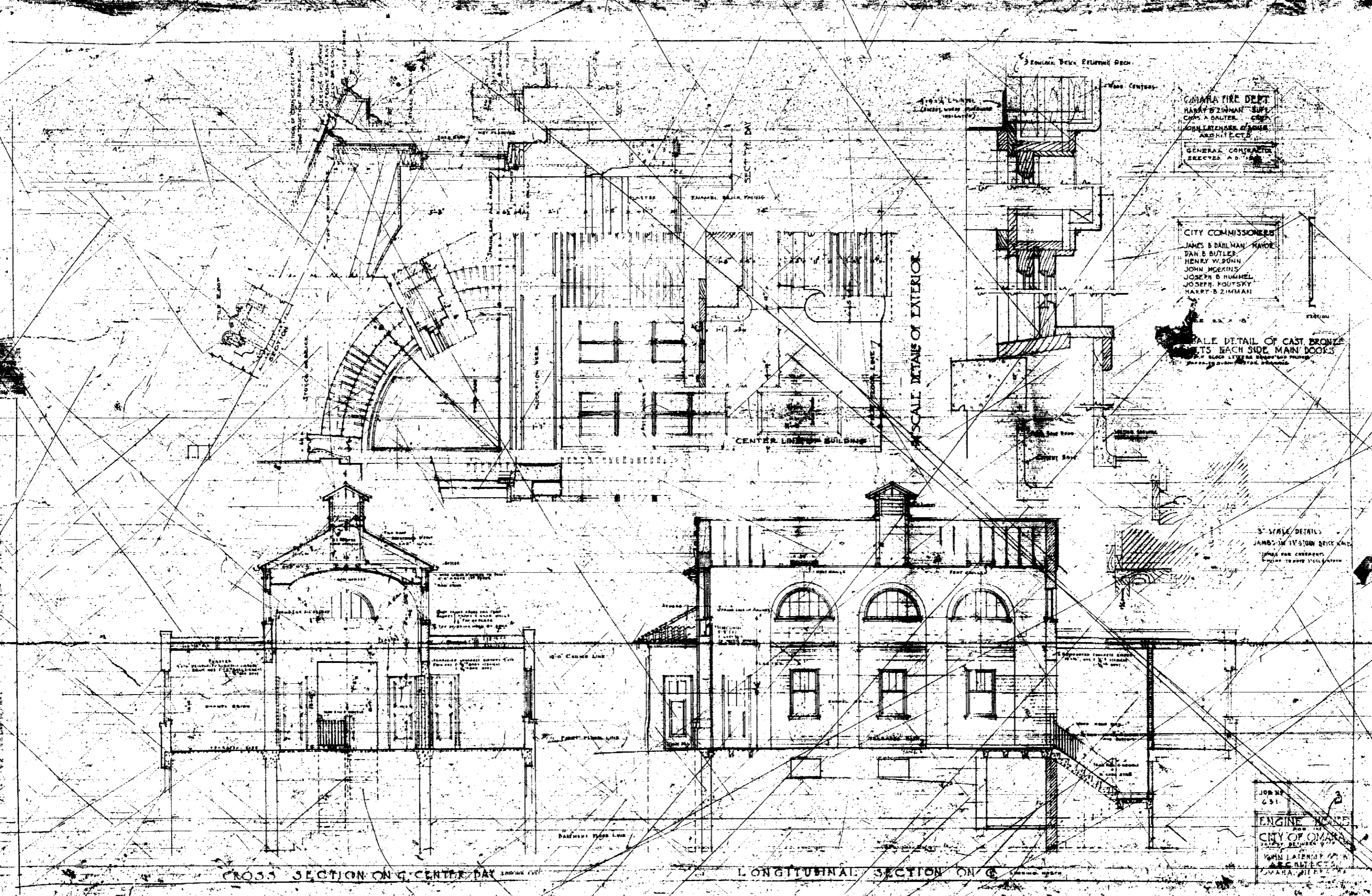
SYMBOLS

Electric Outlet
 Combination Gas & Electric
 Gas Outlet

JOB NO.
 431

ENGINE HOUSE
 For the
 CITY OF OMAHA
 JOHN LAYMAN
 ARCHT.

SCALE 1/4" = 1'-0"



OMAHA FIRE DEPT
 HARRY ZIMMAN, CHIEF
 CAPT. A. GAULT, CDR.
 JOHN LATIMER, ENGINEER
 ARCHITECTS
 GENERAL CONTRACTOR
 DIRECTOR A. D. 18

CITY COMMISSIONERS
 JAMES S. DILLMAN, CHAIRMAN
 DAN B. BUTLER
 HENRY W. DONN
 JOHN MCGINNIS
 JOSEPH B. HANDEL
 JOSEPH FOUTSKY
 HARRY B. ZIMMAN

3/4 SCALE DETAIL OF CAST BRONZE
 JAMBES EACH SIDE, MANY DOORS
 3/4 SCALE DETAIL OF CAST BRONZE
 JAMBES EACH SIDE, MANY DOORS

3/4 SCALE DETAILS
 JAMBES IN 14" STONE BRICK WALL
 JAMBES FOR CORNER
 JAMBES FOR CORNER

JOB NO.
 251
 ENGINE NO. 100
 CITY OF OMAHA
 JOHN LATIMER, ARCHITECT
 OMAHA, IOWA

CROSS SECTION ON G, CENTER DAY

LONGITUDINAL SECTION ON G

