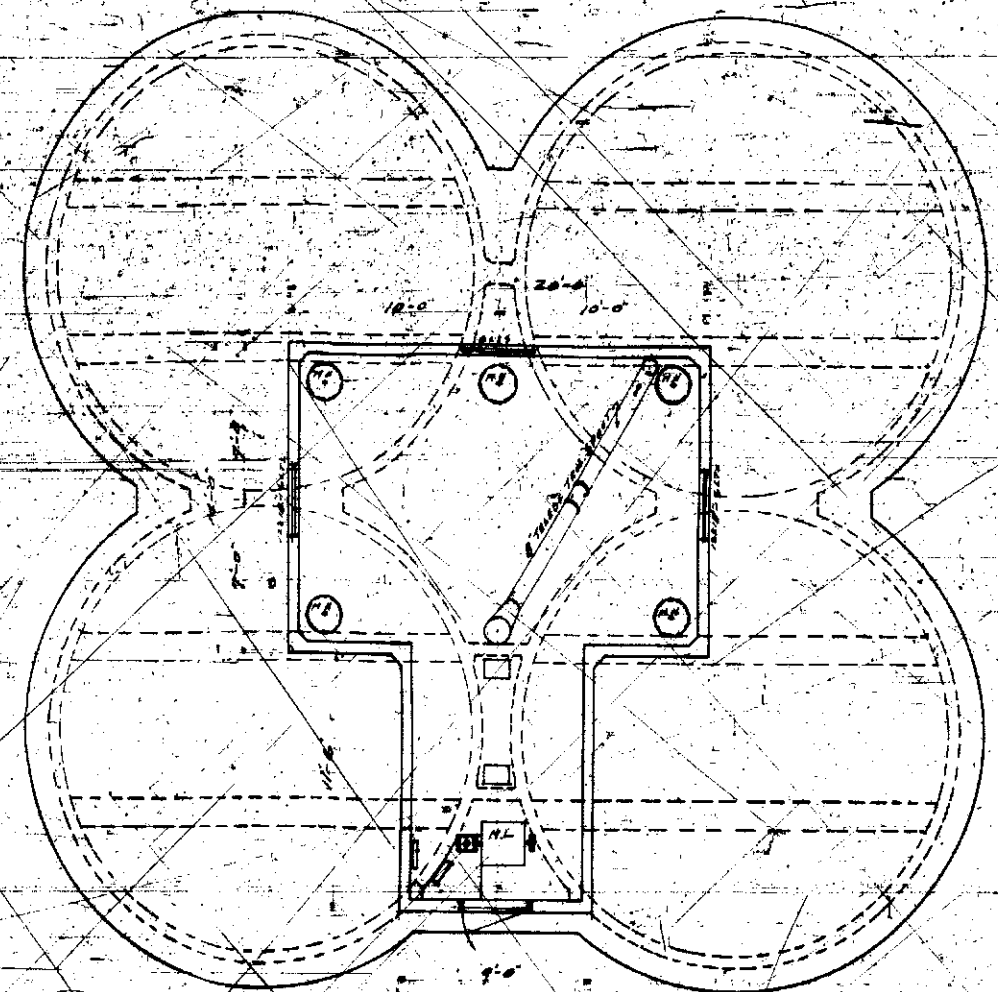


4580

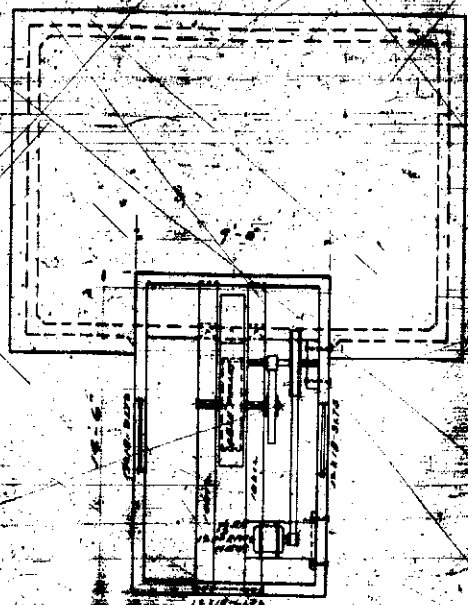
**PLANS APPROVED**  
In accordance with  
Sections 1 and 3  
Ordinance 11,416  
*A. L. Spraul*  
CITY ENGINEER  
CITY DEPARTMENT  
DATE 10-22-22  
CON. # 2322

*Hebr*  
*Consolidated*  
*Mills*  
1512 N. 16th St  
L. M. B. - Holback 1st Aid

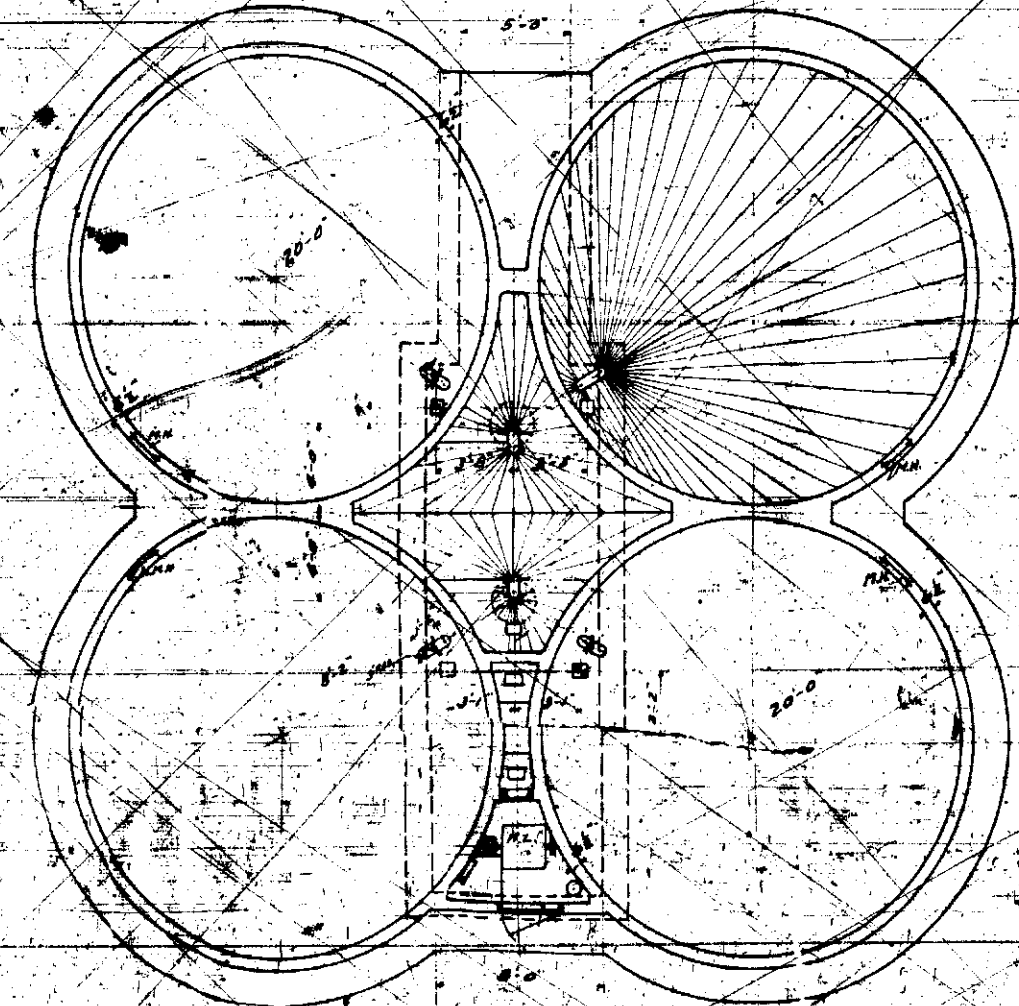




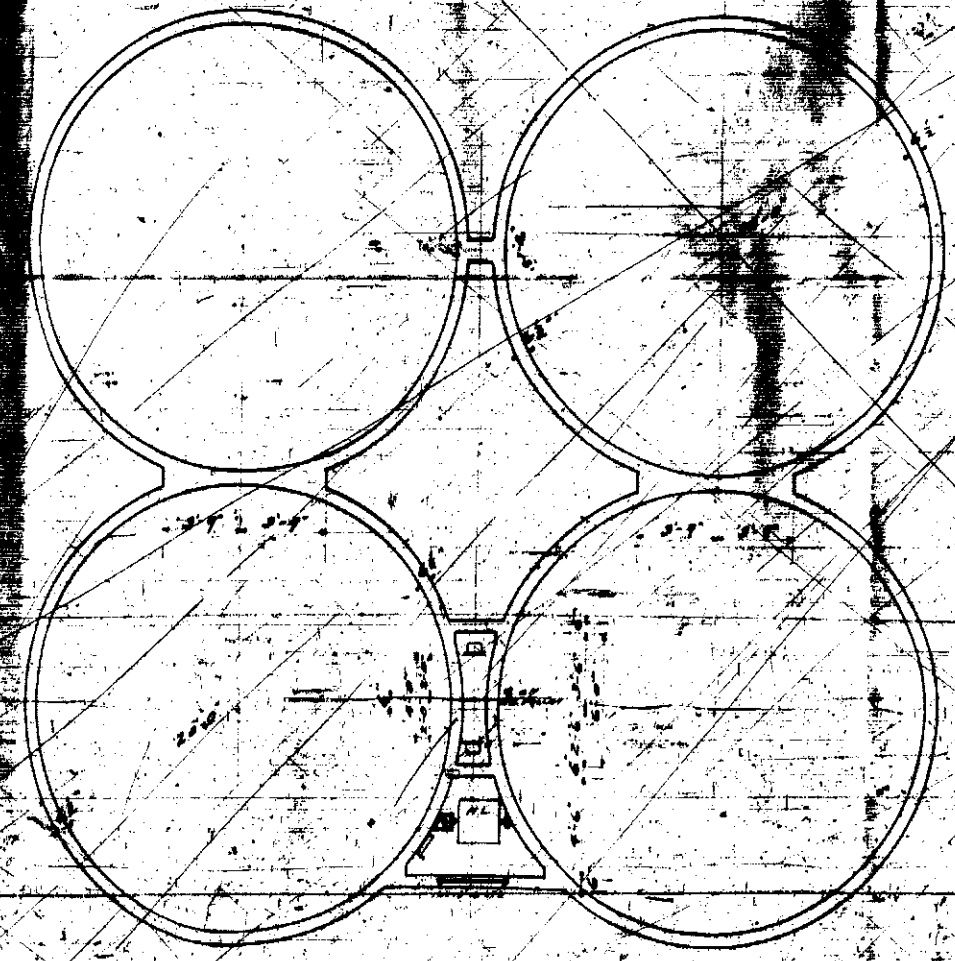
DISTRIBUTING FLOOR  
TANK ROOM PLAN



TANK & CUPOLA ROOF PLAN

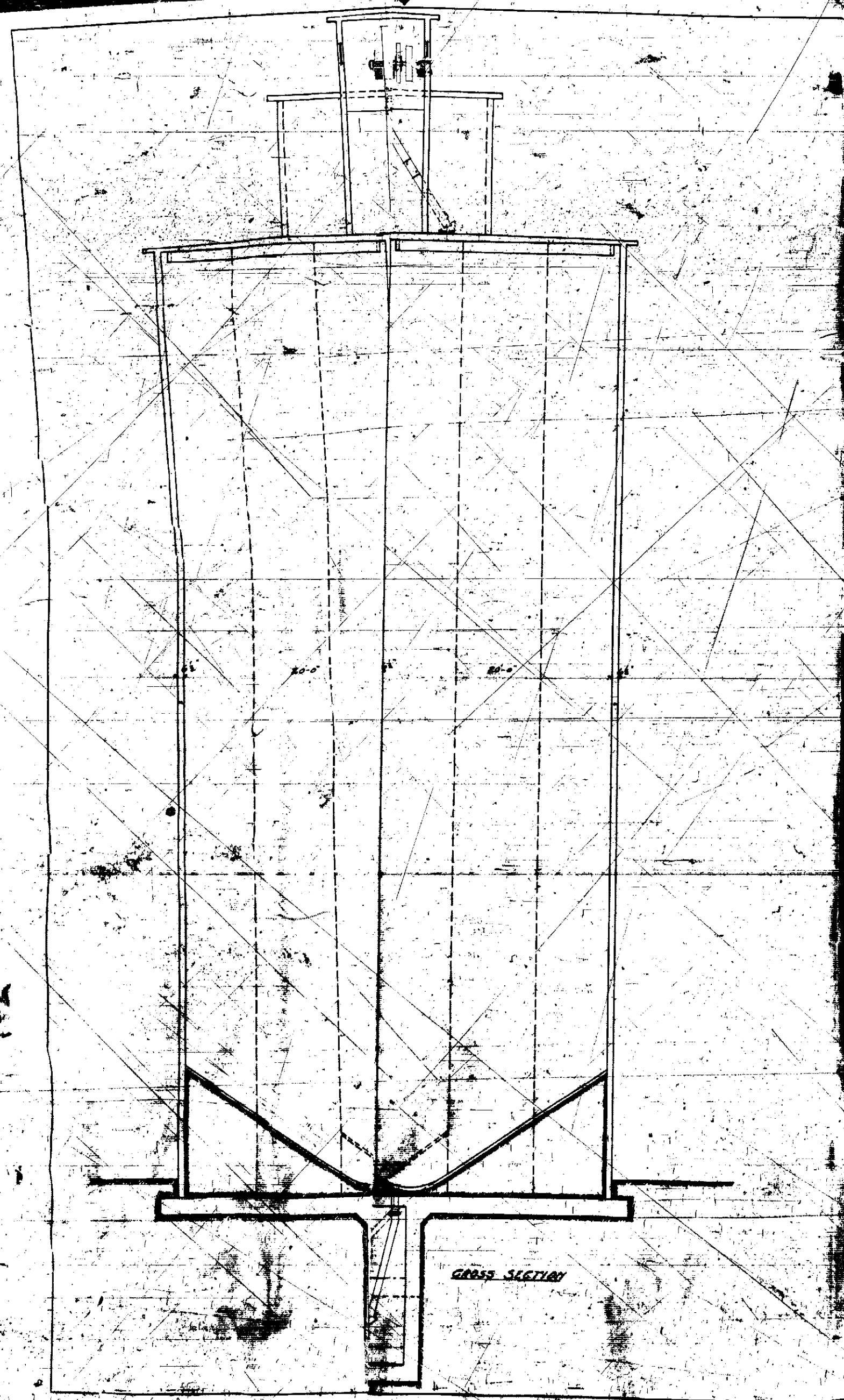


HOPPER PLAN

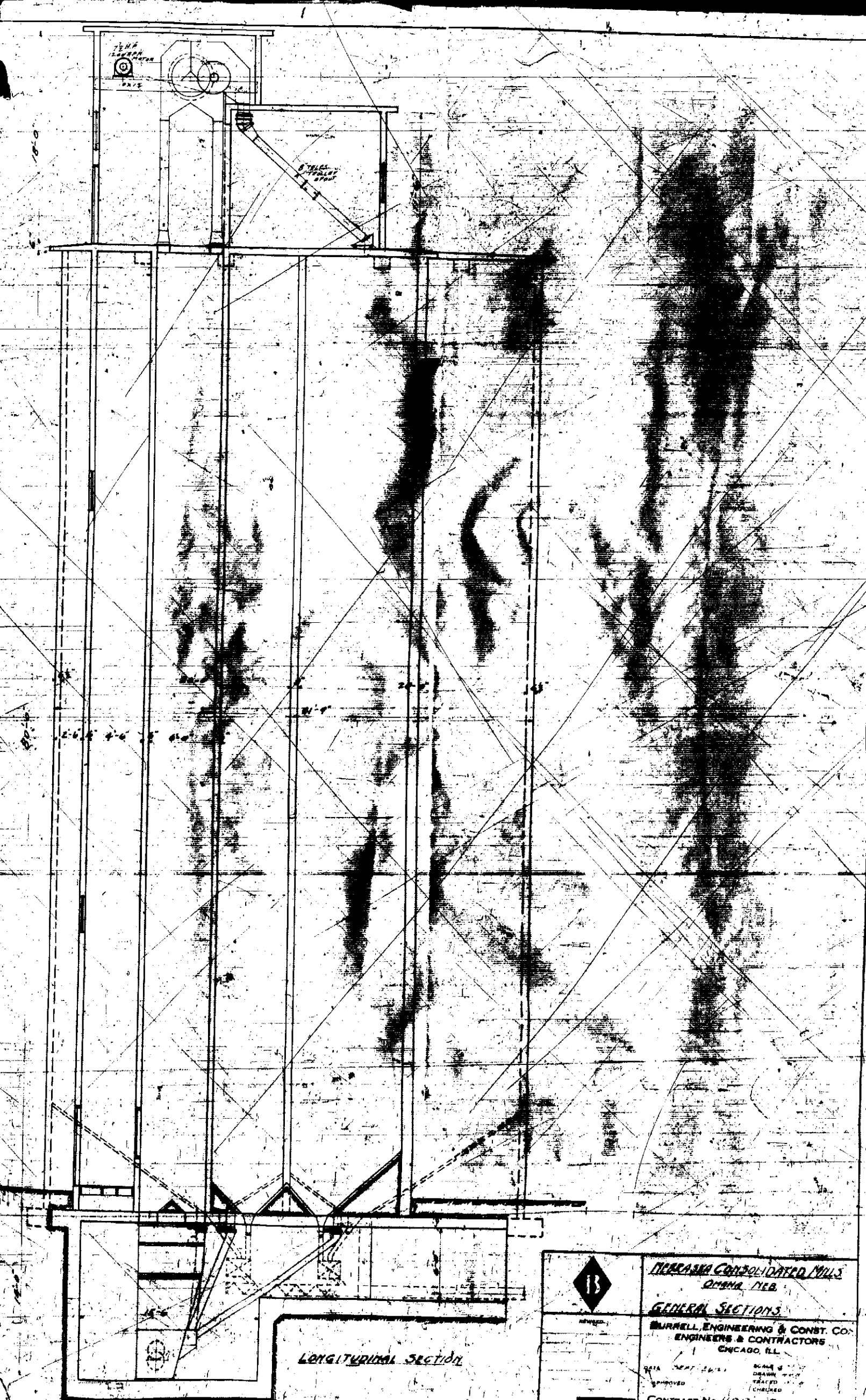


BIN PLAN

<b>B</b>	NEBRASKA CONSOLIDATED MILLS OMAHA, NEB.	
	GENERAL PLANS	
REVISION	BURRELL ENGINEERING & CONST. ENGINEERS & CONTRACTORS CHICAGO, ILL.	
DATE	1927	SCALE 1/4" = 1'-0"
APPROVAL		DATE
PROJECT	CONTRACT No. 1104	SHEET N



GROSS SECTION



LONGITUDINAL SECTION

	<b>NORANDA CORPORATION MILLS</b> DORNA, ILL.	
	<b>GENERAL SECTIONS</b>	
DESIGNED BY	BURRILL ENGINEERING & CONST. CO.	
DRAWN BY	ENGINEERS & CONTRACTORS	
CHECKED BY	CHICAGO, ILL.	
DATE	APPROVED	SCALE
1917		AS SHOWN
		CONTRACT No. 1107 SHEET No. 7

